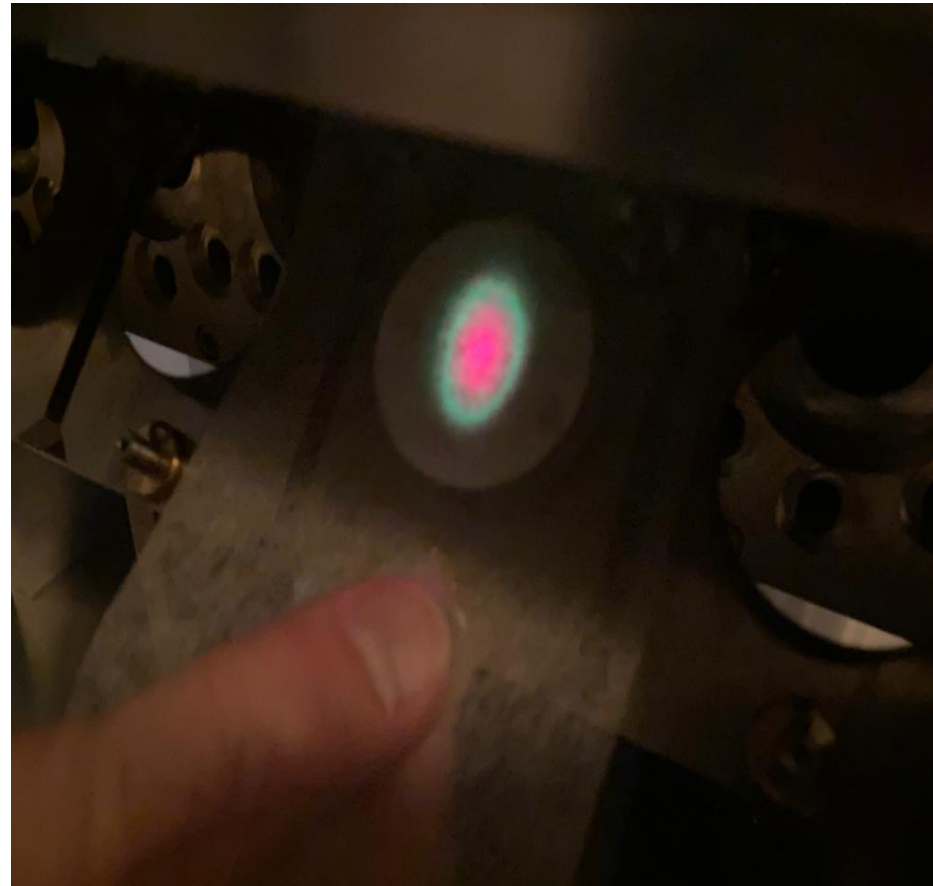
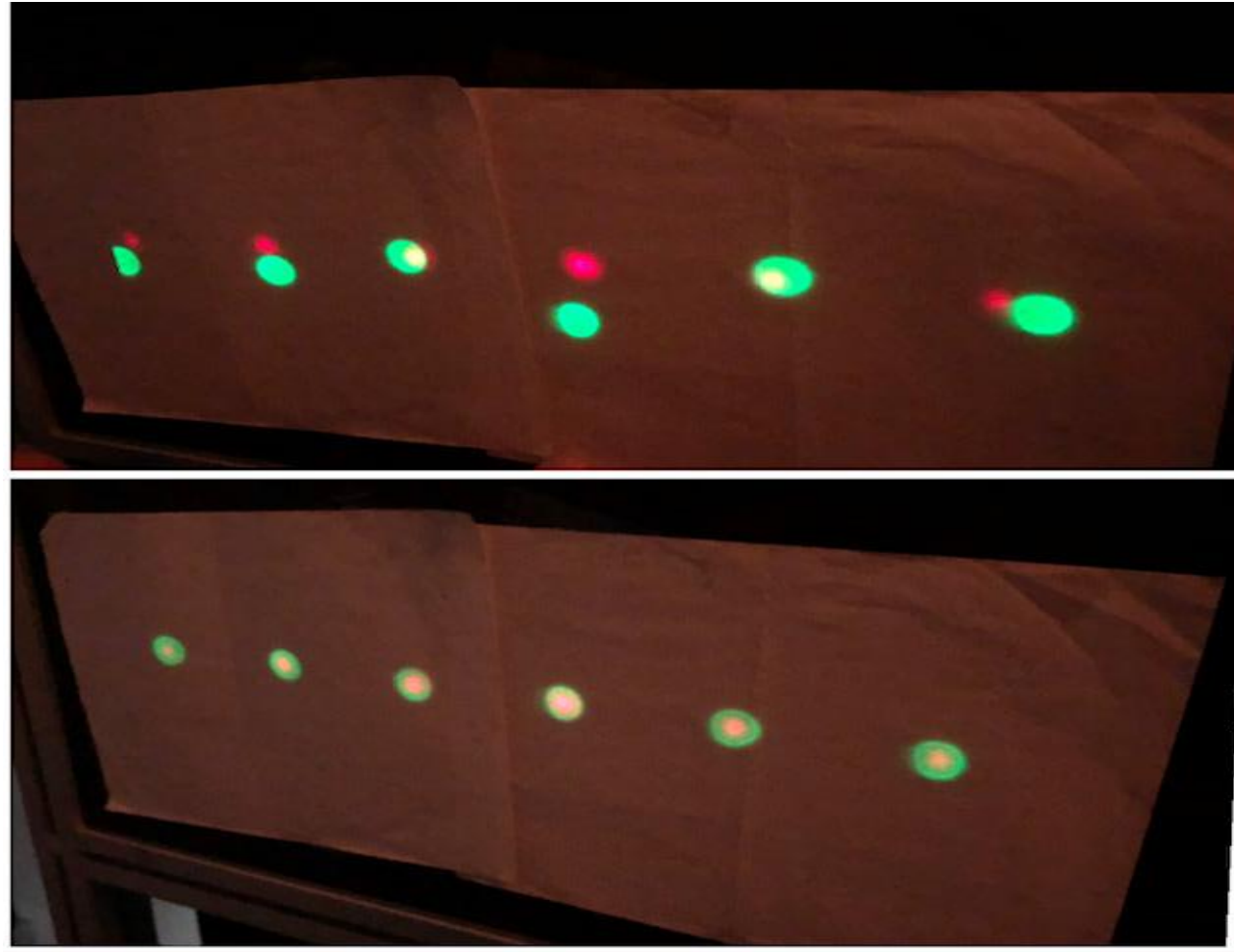


Alignment of the FBI laser on the STS green laser on M1, thanks to the motion of M2



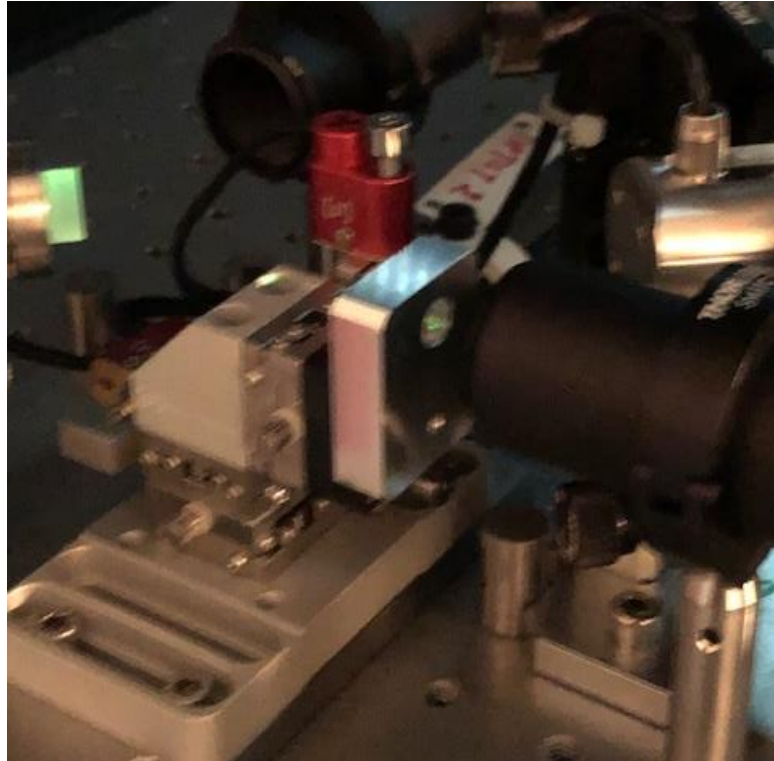
Alignment of the green STS laser at the entrance of the SPICA table on the FBI laser thanks to the motion of M1 of the periscope



# Finalizing the pipes for the Chiller



# Adding the field lens

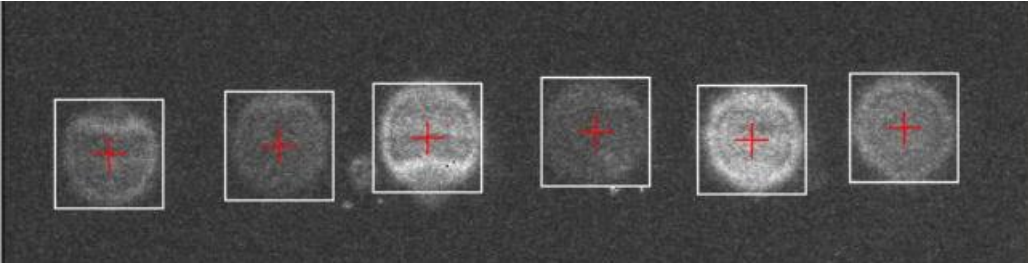


By moving the field lens longitudinally, we adjusted the size of the Pupils on the control detector.

BEFORE ALIGNMENT



AFTER ALIGNMENT



# Christophe finalizing the cabling above the cover



# Positioning and cabling the ADC Block

